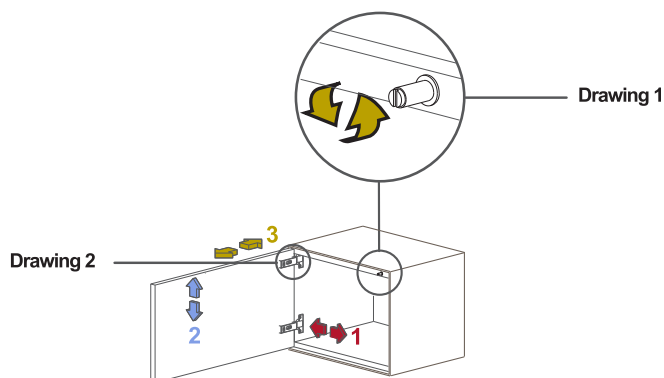


Maintenance instructions

1 If the doors don't open or close correctly

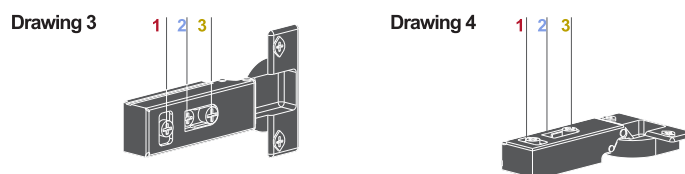
1_ Adjust the push. **Drawing 3**

2_ Level the door from the hinges see **Drawing 1**
For swinging doors see **Drawing 2**



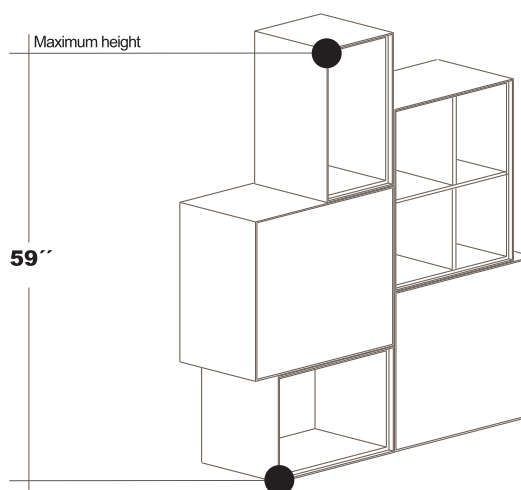
2 If the doors are out of adjustment

Level the door from the hinges see **Drawing 3**
For swinging doors see **Drawing 4**



3 Maximum height

Keep in mind that the maximum height of a set of Forma units must not exceed 59".



4 Cleaning

For cleaning use a cloth moistened with water.
Do not use solvents or cleaning products.
Avoid placing penetrating liquids:
essential oils, perfumes, on top of the furniture